



149 Southfield Road

, Middlesbrough, TS1 3HE

£650 Per month

Progression Property are happy to bring to the market 4 modern apartments on Southfield Road in the vibrant town of Middlesbrough. These apartment are perfect for students and working professionals and prices are starting from £650pcm.

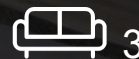
Every apartment is equipped with its own kitchen and bathroom, ensuring privacy and convenience for all residents. Furthermore, the inclusion of bills makes this an attractive option for those looking for hassle-free living.

Situated in an ideal location, the property is just a stone's throw away from Teesside University, making it perfect for students or university staff. Additionally, excellent transport links nearby ensure easy access to the wider region, enhancing the appeal for commuters.

In summary, these apartments on Southfield Road offers a unique blend of spacious living, modern design, and a prime location, making it a fantastic opportunity for anyone looking to settle in Middlesbrough.

Viewing

Please contact our Progression Property Office on 01642 063352 if you wish to arrange a viewing appointment for this property or require further information.



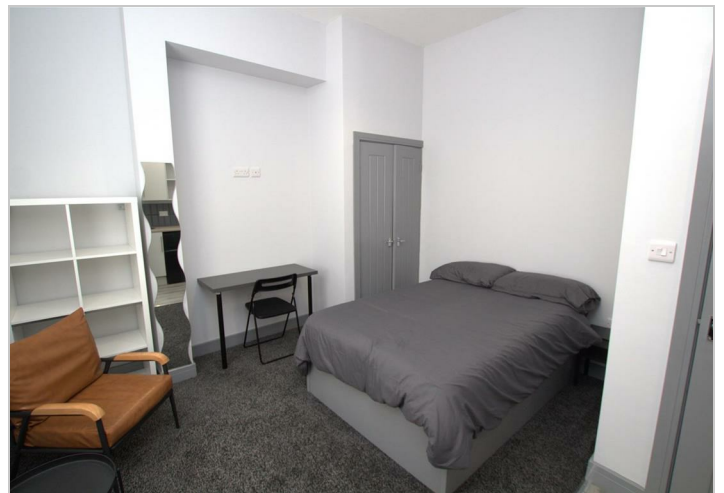
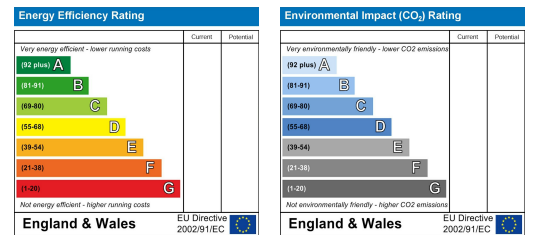
Floor Plan



Area Map



Energy Efficiency Graph



These particulars, whilst believed to be accurate are set out as a general outline only for guidance and do not constitute any part of an offer or contract. Intending purchasers should not rely on them as statements of representation of fact, but must satisfy themselves by inspection or otherwise as to their accuracy. No person in this firm's employment has the authority to make or give any representation or warranty in respect of the property.

329 Linthorpe Road, Middlesbrough, TS5 6AA

Tel: 01642 063352 Email: info@progression-lettings.co.uk <https://www.progression-property.co.uk>